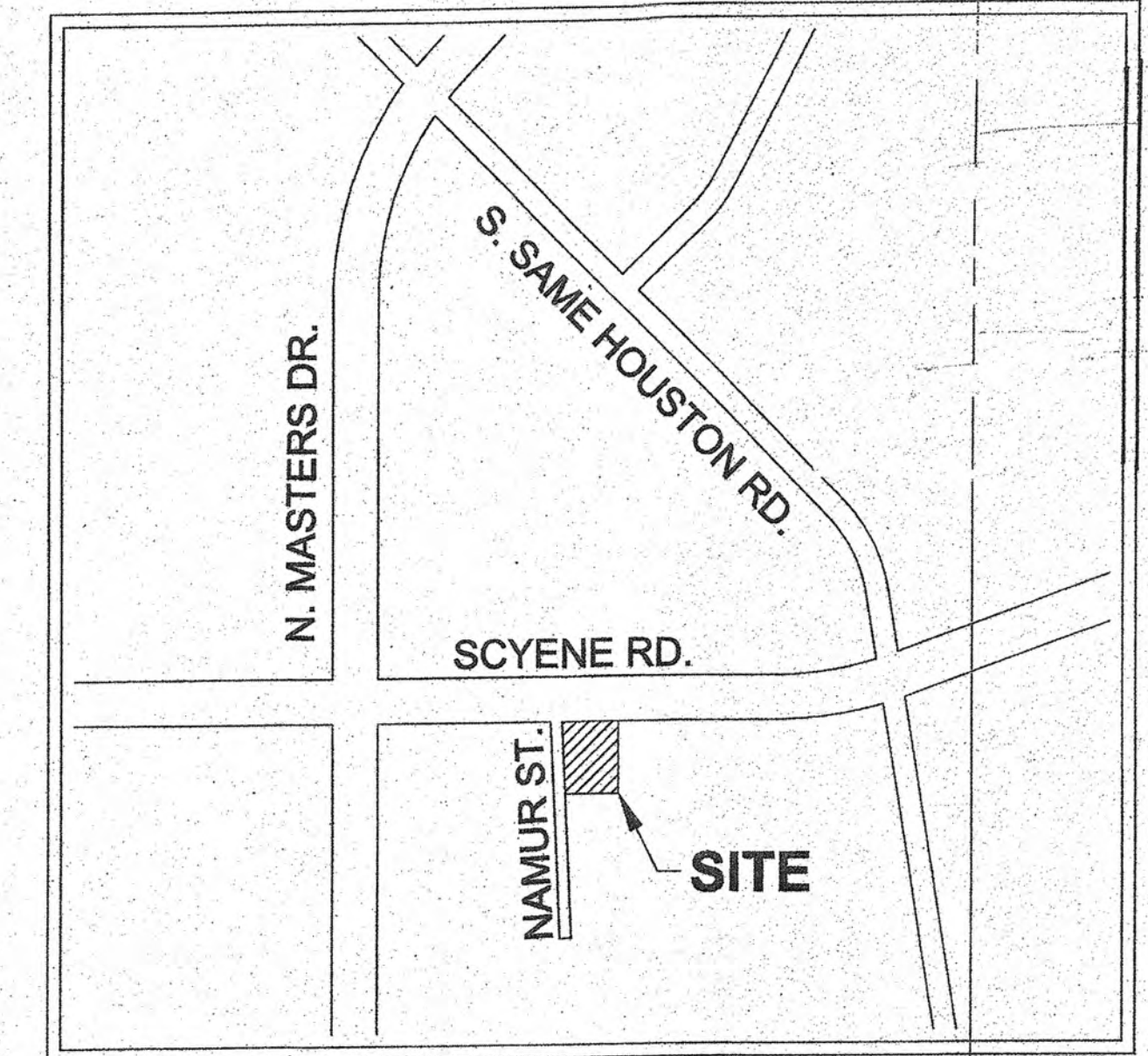
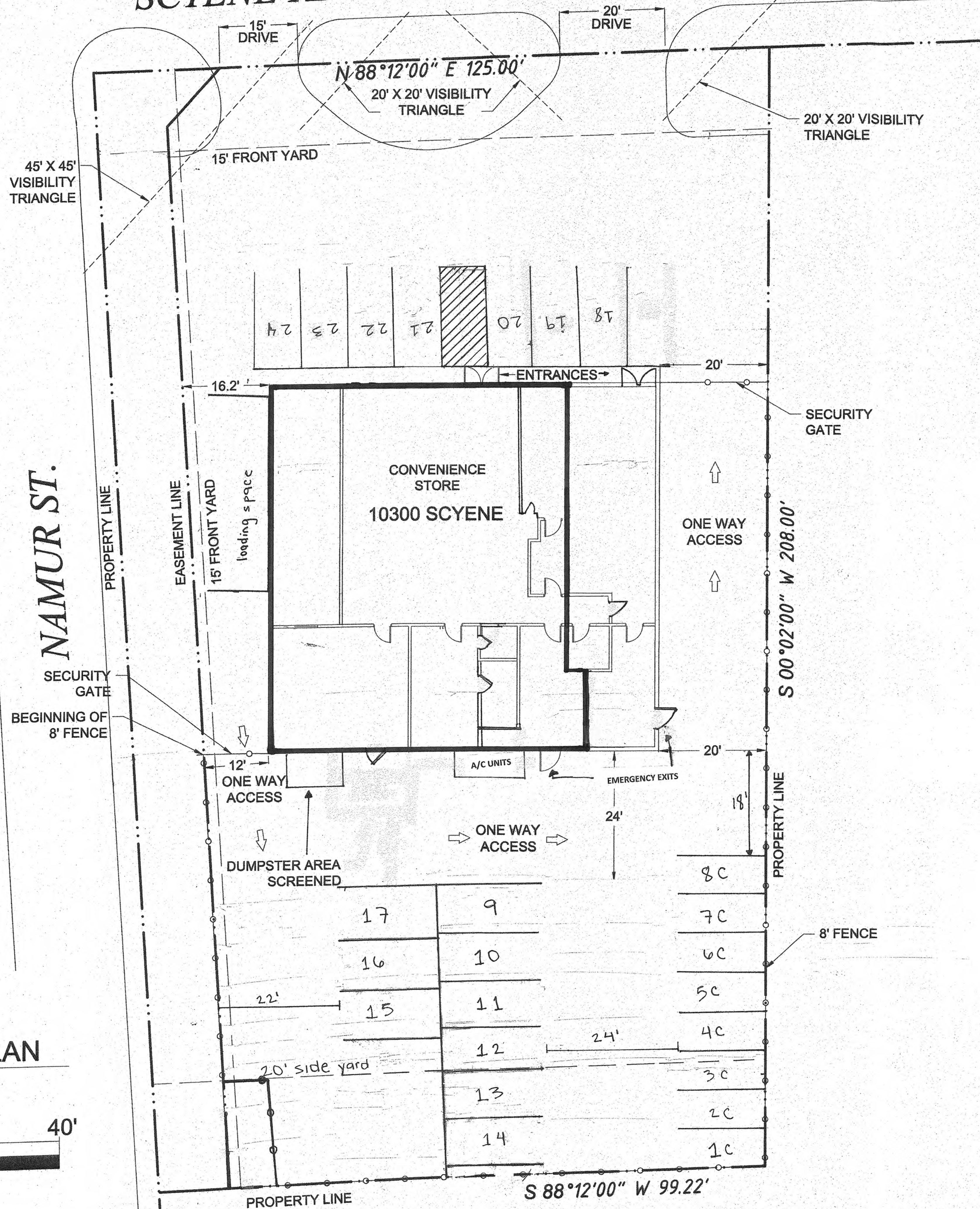


# SCYENE RD.



VICINITY MAP

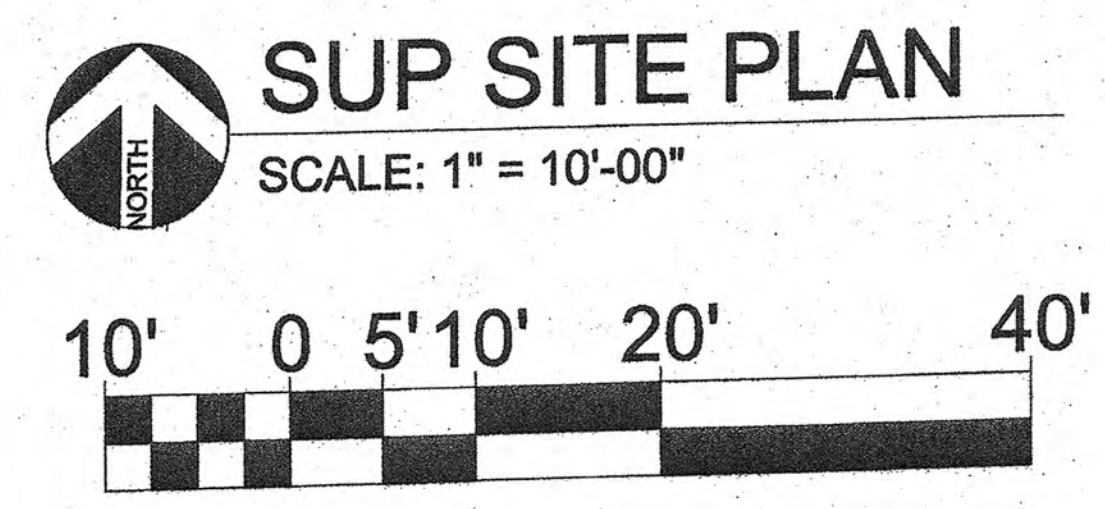
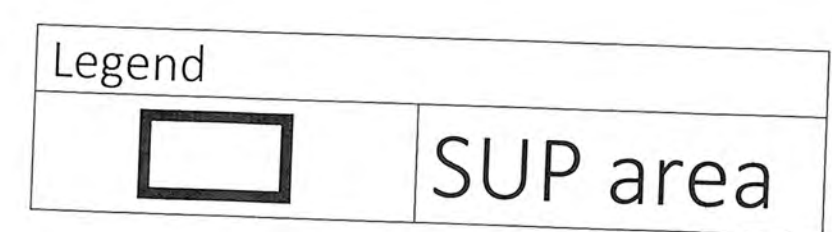


**Site Summary**

Zoning: CR D-1  
 Zoning Request: SUP for the sale of alcoholic beverage for off-premise consumption in conjunction with general merchandise store 3,500 square feet or more.  
 Existing Use for SUP area: General merchandise or food store 3,500 square feet or more.  
 SUP Floor Area: 3,774 square feet.

Convenience Store: 3,774 sqft.
Pharmacy: 1,122 sqft.
<b>Total: 4,896 sqft</b>

Existing Use for Pharmacy: General merchandise or food store less than 3,500 square feet.  
 Parking Ratio: 1/200  
 Required Parking: 24 spaces  
 Provided Parking: 24 spaces  
 Lot Area: 18,944.24 square feet



**SUP SITE PLAN**

SCALE: 1" = 10'-00"

10300 SCYENE RD.  
 CITY OF DALLAS, TEXAS

PROJECT NUMBER  
**Z189-336**  
 CASE NUMBER